

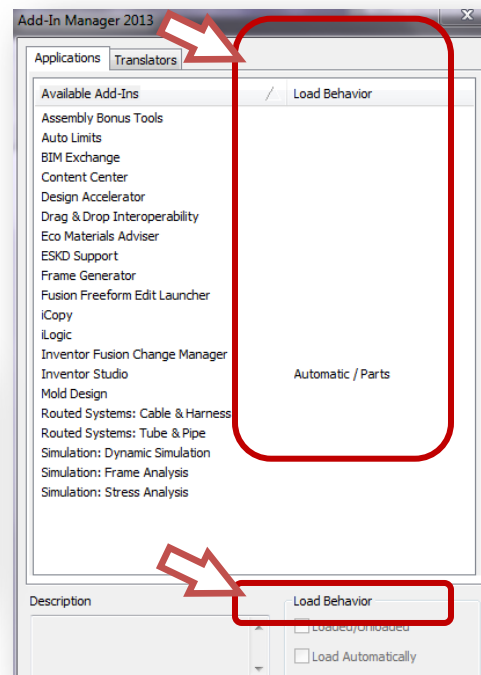
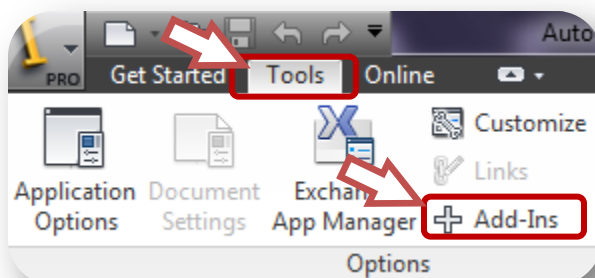
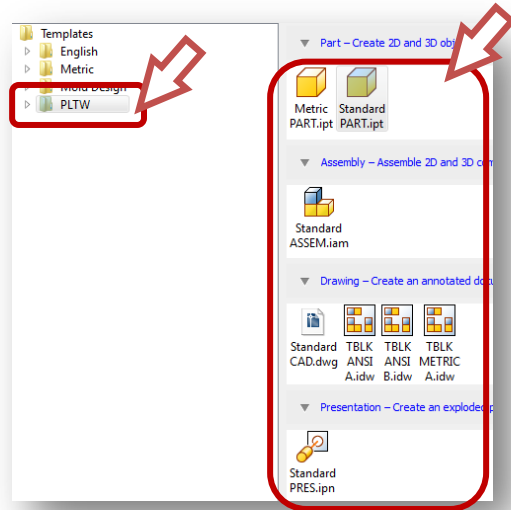
-----CIM-----

Verifying & Setting-Up Inventor Software

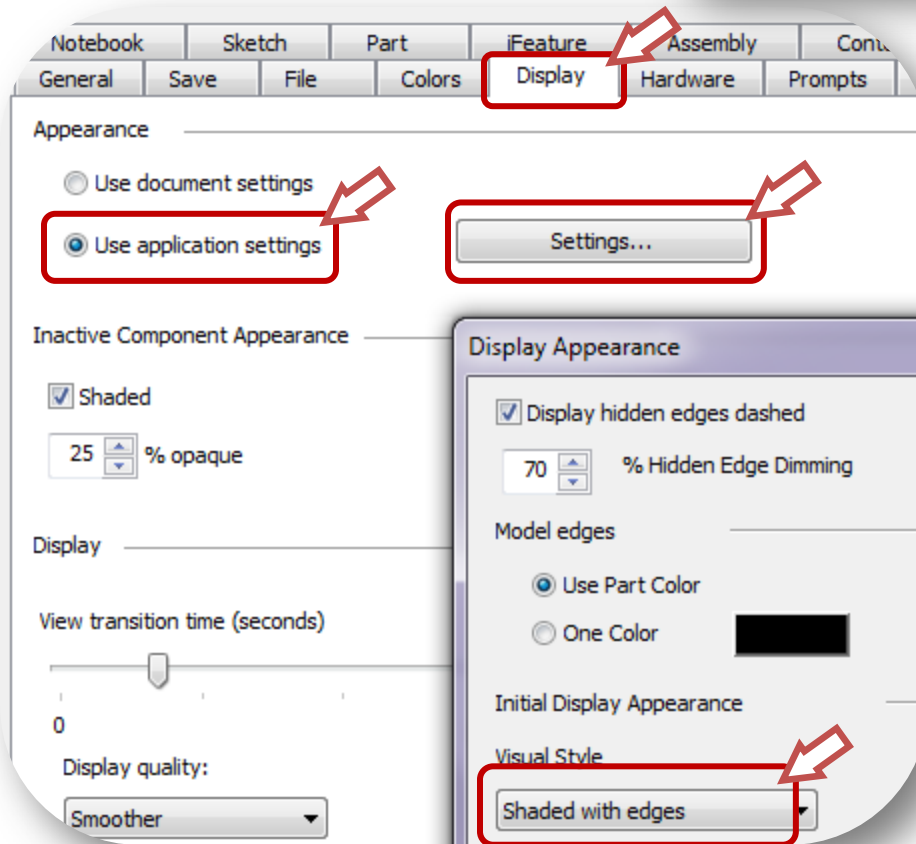
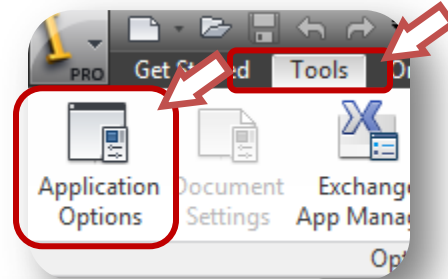
After you tech support has followed the instructions from the PLTW Virtual Academy for each of the following software packages, it is essential to follow-up and verify that the software not only opens, but works and is setup as well **before** an image is made. (Once all software is verified and setup, it should be re-verified for functionality with a student login)

Inventor - (Check for license availability under a student login as well)

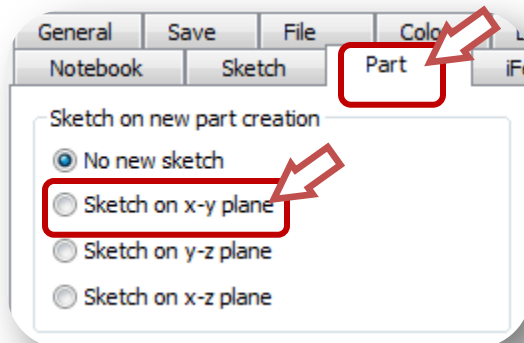
- **Optional** - Install any templates like customized title blocks. A set of PLTW templates are available. Place the templates in the following location
 - Windows XP – C:\Program Files\Autodesk\Inventor 2013\Templates
 - Windows 7 – C:\Users\Public\Public Documents\Autodesk\Inventor 2013\Templates
- **Essential** - Open Inventor to ensure it is communicating with the server key and is licensed.
- **Recommended** - Shut down any unneeded Add-Ins to speed-up the load processes of Inventor. Select all Add-Ins that are unneeded on a regular basis and unselect load automatically. (**Do not unload**. If any Add-Ins are needed later, they can be turned back on and will reload the next time Inventor is started)



Optional - Change default view for showing edges of parts. Select Application Options from the Tools Tab. Select the Display Tab and choose Use application settings. Next to this option, select the settings button. In this pop-up dialog box, change the Visual Style from Shaded to Shaded with edges



- **Optional** - If you want to reassign Inventor to automatically start in sketch mode on the XY Plane instead of defaulting to starting in part mode where a origin sketch plane must be selected. Select the part tab from the Application Options button on the Tools tab. Select the Part tab from the pop-up window.



Optional – If desired, the automatic location assigned for saving files can be changed from a folder in each user’s my documents to an alternative location. (*i.e., a server*). Select Application Options from the Tools tab. Select the File Tab from the Pop-up Window.

