



SSC-32USB Start Up Procedure

Using the new SSC-32 USB and want to connect it to your computer running Windows 7 or 8? It's really easy! Just follow the steps below.

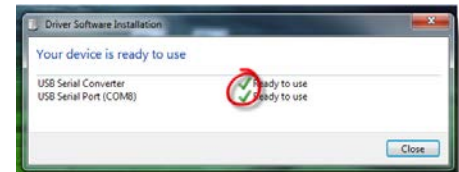
1. Be sure power to watch the video here to be sure that it is wired correctly!

<http://chrisandjimcim.com/how-do-i-get-the-new-ssc-32u-up-and-running-2/> and <http://chrisandjimcim.com/how-does-the-ssc-32-usb-work/>

2. Be sure that the power to the board is OFF, and that any software using the board is not open. We use FlowArm PLTW, but any other software that may be using it should be closed too.
3. Plug in the board via the USB cable. Note in the bottom right corner of the screen an icon telling you that a driver is being installed.



4. If you click on this icon, you can see that windows is installing a driver for the board. Just let it do its thing. There are no special drivers to install, the Windows ones work fine! Note: **It may take a few minutes (2-3 minutes) for this install to occur!** When you get 2 green checks you are ready to go. After the first time, it will connect quickly and automatically every single time.
5. Turn on the power to the board. This will allow the software to find it automatically!
6. Open the software. Open FlowArm PLTW.
7. The software automatically searches the USB ports for the board, and you will see a green light in the bottom right of the window blinking to indicate this. And the com ports will be cycling through just above the blinking light.



8. Click on the Bluetooth icon. This sets the baud rate correctly, and your arm will come to attention and the found light will come on. You are now connected.



